



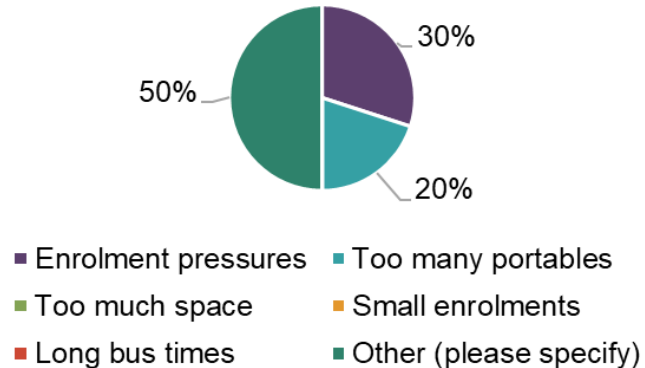
SW Brantford Attendance Boundary Review: Meeting #2

Brant Haldimand Norfolk Catholic District School Board
April 5, 2023

Committee Survey #1



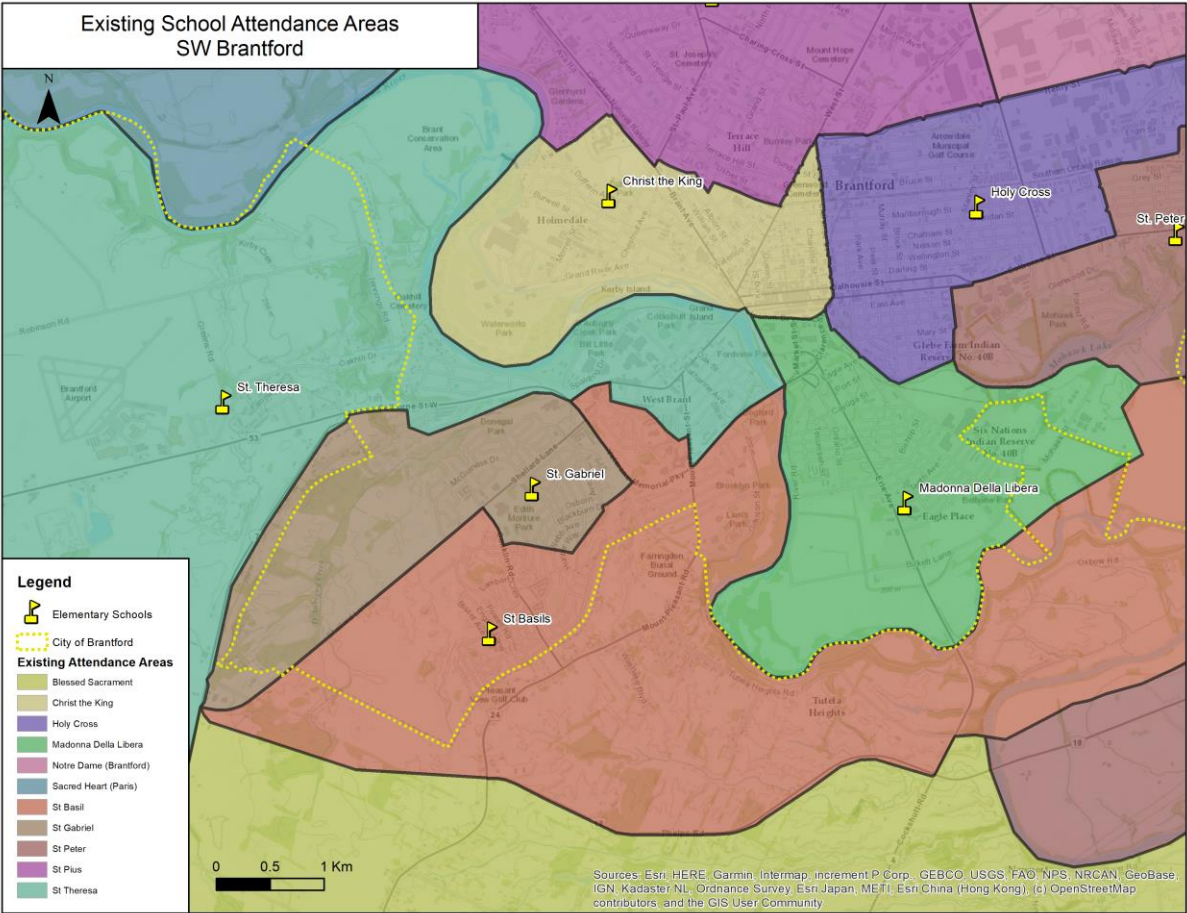
What are some initial issues you see with the existing conditions at your school?



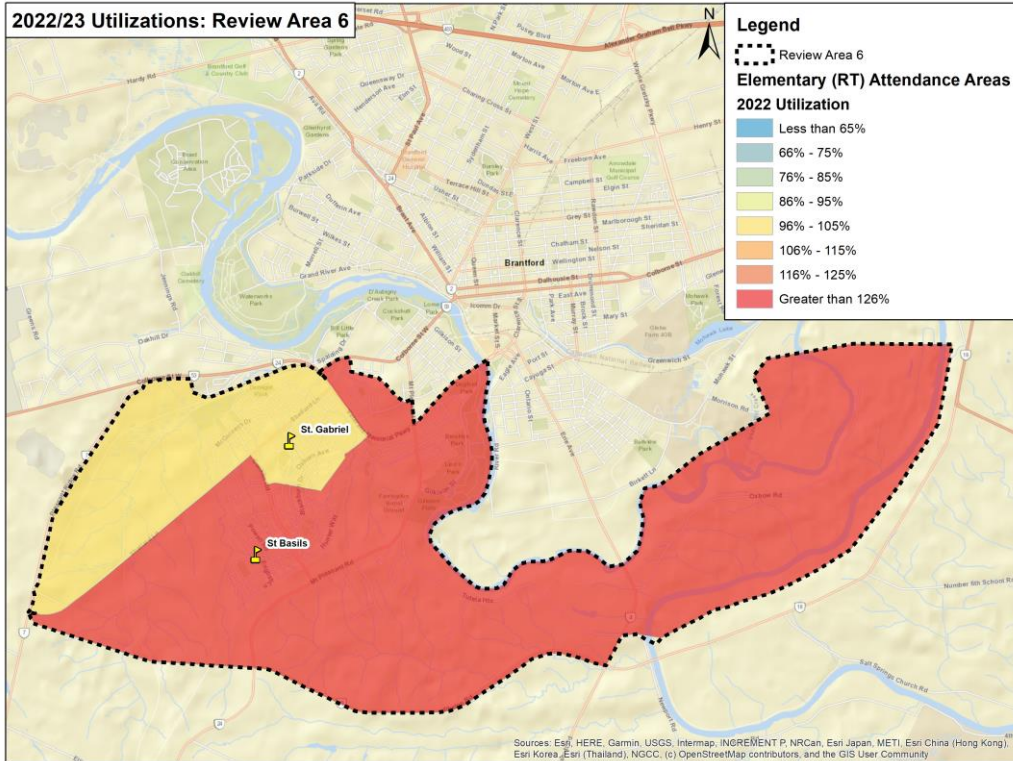
Are there any unique circumstances surrounding your school and community that you feel Board staff and the consultant team should be aware of?

Repeated Themes: Safety/increased traffic/parking issues, walking conditions, staffing/resources.

Existing School Boundaries



High Utilization Rates/Enrolment Pressures



School Name	On-the-Ground Capacity	2022/23 Enrolment	Utilization
St. Basil	484	657	136%
St. Gabriel	389	398	102%
Total Elementary	873	1,055	121%

Legend

Less than 65%
66-75%
76-85%
86-95%
96-105%
106-115%
116-125%
Greater than 126%

Enrolment and Utilization

Current and Projected



School Name	On-The-Ground Capacity	HISTORICAL				PROJECTED		
		2011/ 2012	2016/ 2017	2020/ 2021	2021/ 2022	2022/ 2023	2026/ 2027	2031/ 2032
St. Basil	484.0	248	419	547	562	657	852	1,191
St. Gabriel	389.0	445	440	412	392	398	411	544
St Theresa	210.0	152	173	167	176	189	185	175
TOTAL	1,083.0	845	1,032	1,126	1,130	1,244	1,447	1,910

School Name	On-The-Ground Capacity	HISTORICAL				PROJECTED		
		2011/ 2012	2016/ 2017	2020/ 2021	2021/ 2022	2022/ 2023	2026/ 2027	2031/ 2032
St. Basil	484.0	51%	87%	113%	116%	136%	176%	246%
St. Gabriel	389.0	114%	113%	106%	101%	102%	106%	140%
St Theresa	210.0	72%	82%	80%	84%	90%	88%	83%
TOTAL	1,083.0	78%	95%	104%	104%	115%	134%	176%

Border Crossing



Attending School	Border-Crossing “In” # of students from other school area, attending this school	Border-Crossing “Out” # of students from this school area, attending elsewhere	Border-Crossing “Net”
St. Basils	30	132	-102
St Gabriel K - 8	116	17	99
St Theresa K - 8	19	39	-20
Total	165	188	-23

- 9 St. Basil’s students reside in the St. Gabriel boundary
- 88 St. Gabriel students reside in the St. Basil’s boundary
- 15 St. Gabriel students reside in the St. Theresa boundary
- 13 St. Theresa students reside in the St. Basil’s boundary

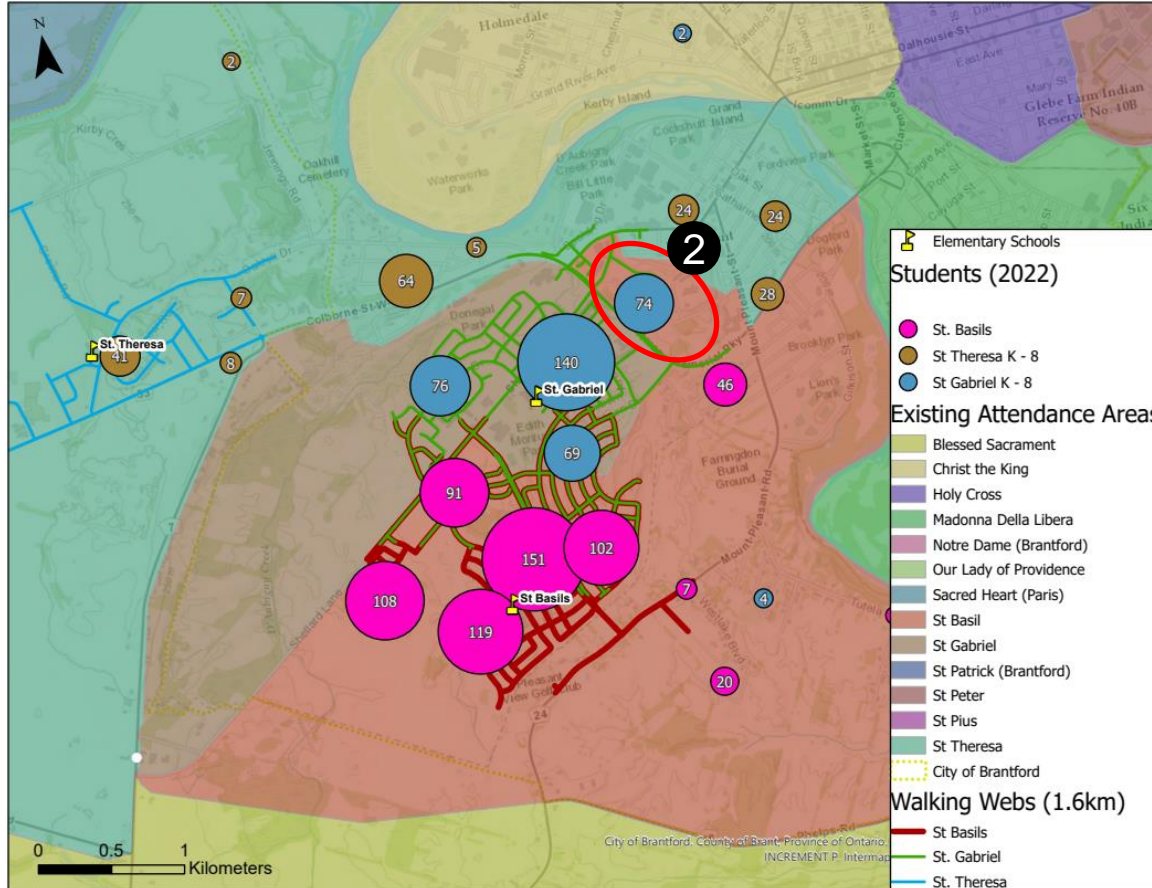
Students Returned to Home Boundary



Students Returned to Home Boundary (2022 Student Plot)

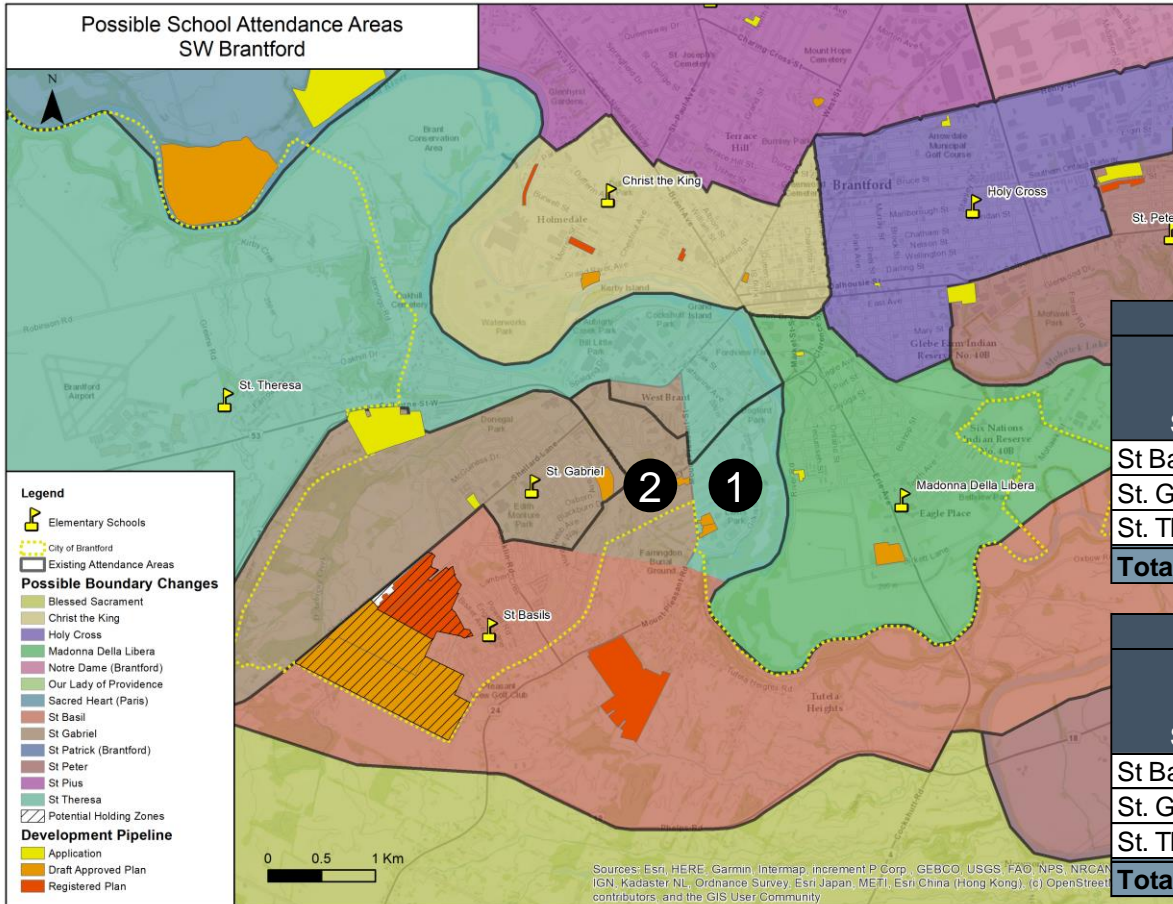
Attending School	OTG	JK	SK	G1	G2	G3	G4	G5	G6	G7	G8	Total	Students Returned Utilization	Current Utilization
St Basil	484	73	60	86	94	65	78	88	72	70	74	760	157%	136%
St. Gabriel	389	21	22	28	24	22	28	40	38	34	42	299	77%	102%
St. Theresa	210	18	19	26	22	15	21	21	22	27	20	211	100%	91%
Total	1,083	112	101	140	140	102	127	149	132	131	136	1,270	117%	115%

Border Crossing



- 1 9 St. Basil's students reside in the St. Gabriel boundary
- 2 88 St. Gabriel students reside in the St. Basil's boundary
- 3 15 St. Gabriel students reside in the St. Theresa boundary
- 4 13 St. Theresa students reside in the St. Basil's boundary

Possible Boundary Option 1: SW Brantford

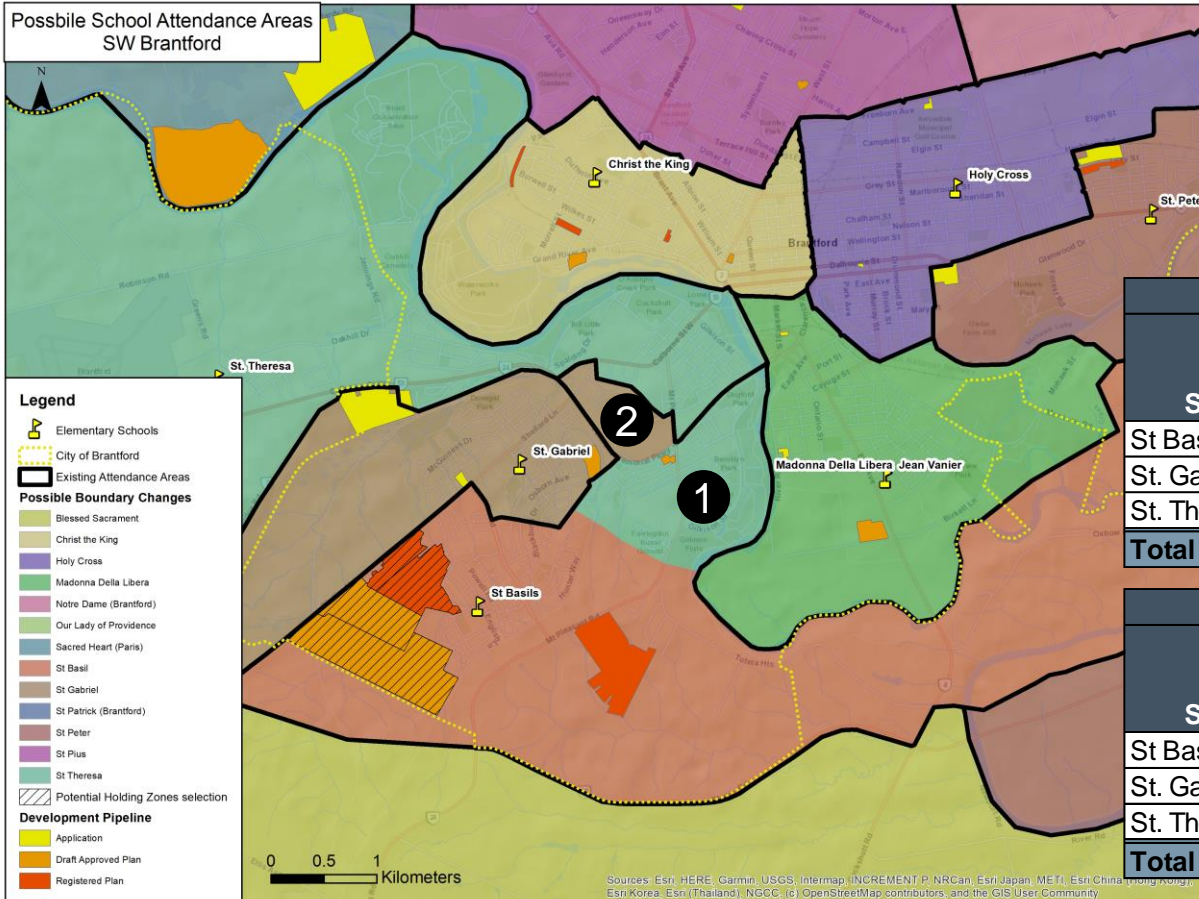


- 1 Extend St Teresa's catchment into St Basils;
- 2 Extend St Gabriel's catchment into St Basils.

Current Conditions				
School	OTG	2022 Enrolment	Utilization	# of Portables (2022)
St Basil	484	658	136%	6
St. Gabriel	389	398	102%	6
St. Theresa	210	191	91%	0
Total	1,083	1,247	115%	12

Proposed Conditions				
School	OTG	2022 Enrolment	Utilization	# of Portables (2022)
St Basil	484	584	121%	4
St. Gabriel	389	456	117%	3
St. Theresa	210	207	99%	0
Total	1,083	1,247	115%	7

Possible Boundary Option 2: SW Brantford



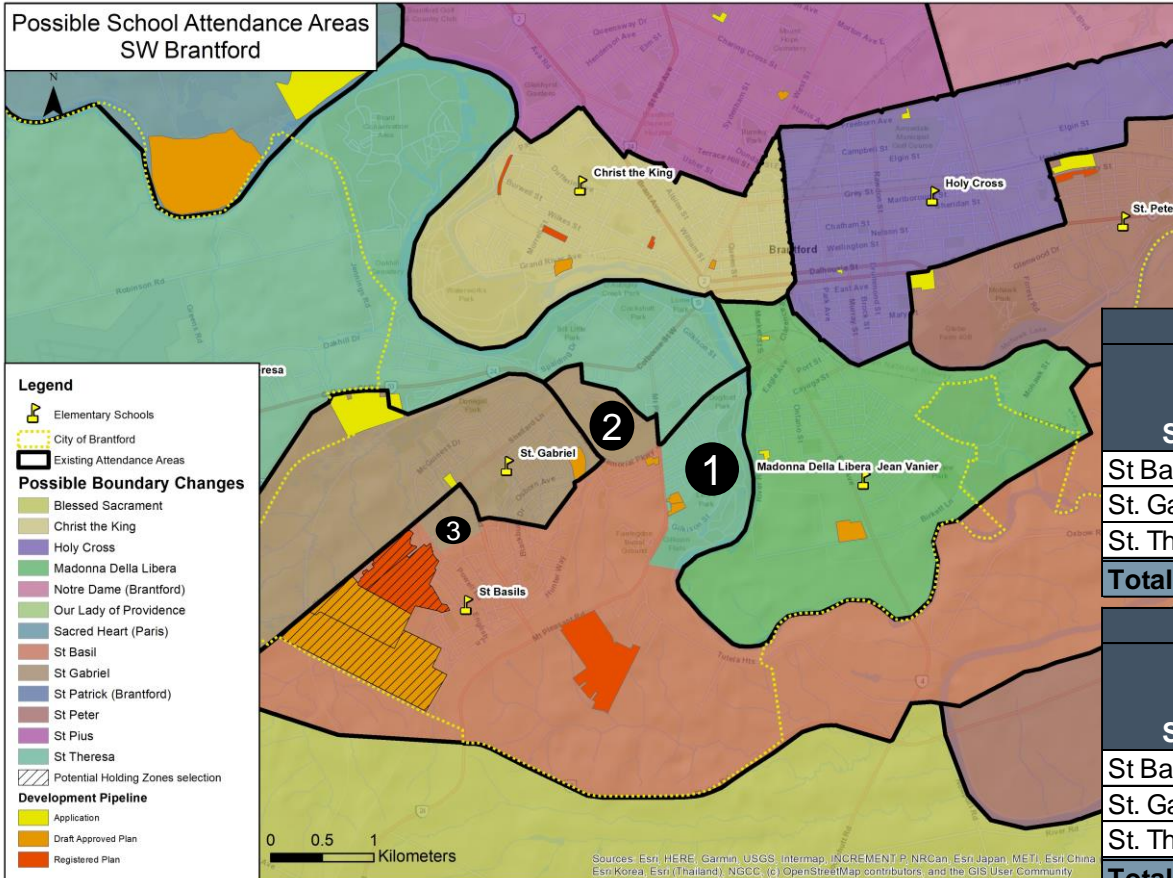
- 1** Extend St Teresa's catchment into St Basils;
- 2** Extend St Gabriel's catchment into St Basils.

Current Conditions				
School	OTG	2022 Enrolment	Utilization	# of Portables (2022)
St Basil	484	658	136%	6
St. Gabriel	389	398	102%	6
St. Theresa	210	191	91%	0
Total	1,083	1,247	115%	12

Proposed Conditions				
School	OTG	2022 Enrolment	Utilization	# of Portables (2022)
St Basil	484	583	120%	4
St. Gabriel	389	423	109%	1
St. Theresa	210	241	115%	1
Total	1,083	1,247	115%	7

Sources: Esri, HERE, Garmin, USGS, Intermap, INCREMENT P, NRCan, Esri Japan, METI, Esri China (Hong Kong), Esri Korea, Esri (Thailand), NGCC, (c) OpenStreetMap contributors, and the GIS User Community

Possible Boundary Option 3: SW Brantford



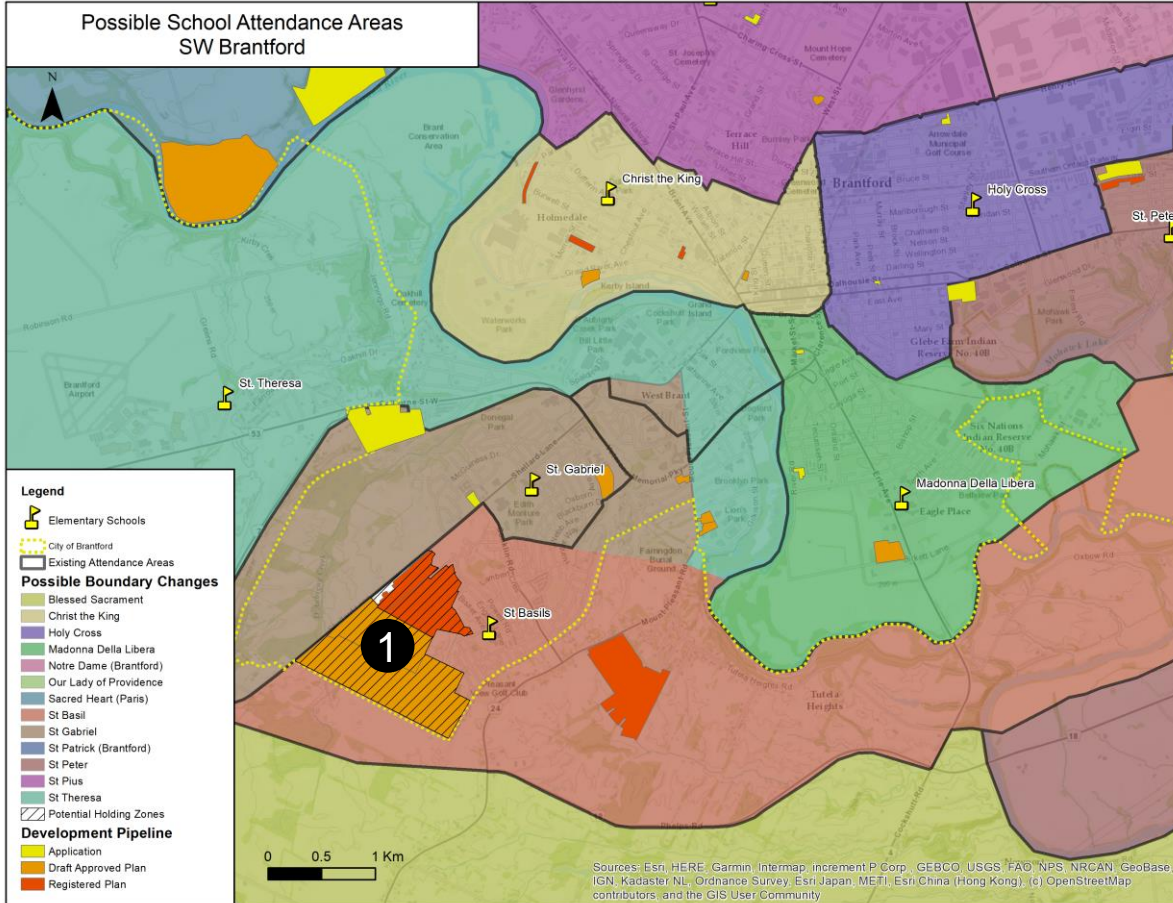
- 1 Extend St Teresa's catchment into St Basils;
- 2 Extend St Gabriel's catchment into St Basils;
- 3 Extend St Gabriel's catchment into St Basils.

Current Conditions				
School	OTG	2022 Enrolment	Utilization	# of Portables (2022)
St Basil	484	658	136%	6
St. Gabriel	389	398	102%	6
St. Theresa	210	191	91%	0
Total	1,083	1,247	115%	12

Proposed Conditions				
School	OTG	2022 Enrolment	Utilization	# of Portables (2022)
St Basil	484	553	114%	3
St. Gabriel	389	463	119%	3
St. Theresa	210	231	110%	1
Total	1,083	1,247	115%	7

Sources: Esri, HERE, Garmin, USGS, Intermap, INCREMENT P, NRCan, Esri Japan, METI, Esri China (Hong Kong), Esri (Thailand), NGCC, (c) OpenStreetMap contributors, and the GIS User Community

Possible Boundary Options: SW Brantford



- 1 Develop holding zones where significant development is expected, holding students at schools with existing surplus space.

Implementation Decisions & Discussions



- Enforce boundary crossing (return students to home schools)?
- Legacy Agreements?
- Staffing requirements/needs
- School Space Audits/Temporary spaces

NEXT STEPS



- Committee members to provide feedback based on options presented.
 - Survey to be distributed
- Committee members can submit questions or comments to swbrantford@bhncdsb.ca
- Public meeting: April 17 @ 6:30PM
- Prepare and present final options to Trustees for approval on April 25 @ 7:00PM

QUESTIONS/COMMENTS?